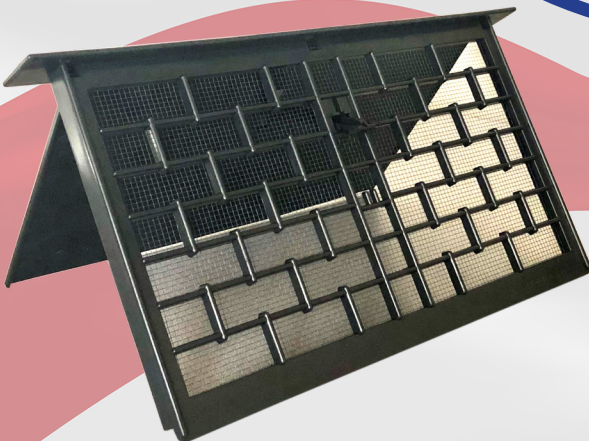


VENT

WITTEN

COMPANY

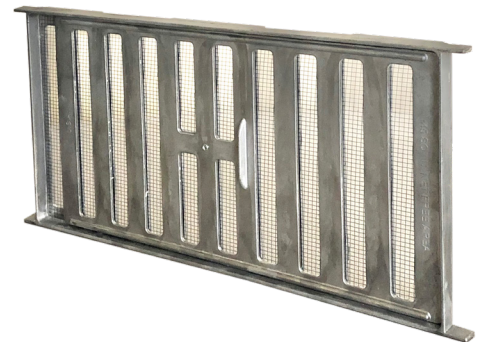
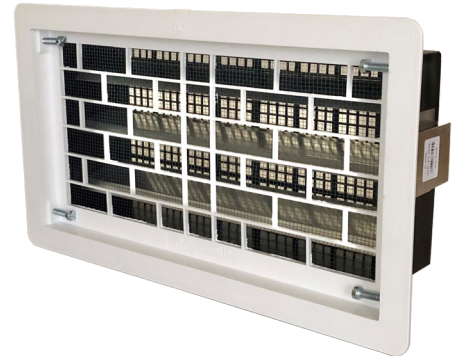


ANOTHER QUALITY FOUNDATION VENT
2024 CATALOG

Table of Contents



Part Number Guide.....	1
Automatic Vents Installation Guide.....	2
Replacement Automatic Vents.....	3-5
Automatic Vents for New Construction.....	6
Plastic Manual Sliders	7
Plastic Manual Dampers.....	8
Plastic Open Air Dampers	9
Plastic Open Air Grills.....	9
Aluminum Manual Sliders.....	10
Louvered Block Vent.....	11
Brick Vents.....	11
Power Vent	12-13
Flood Vent	13



Witten Vent was established in the 1970's by A.F. Witten, a civil engineer and business entrepreneur. His uniquely designed plastic Automatic Vents are used in crawl space foundations, and are temperature controlled to open and close automatically. They are sold throughout the U.S.A. to a network of dealers and distributors.

In the early 1990's, his son Erik expanded the foundation vent line to add aluminum and several new plastic manual vents, including the Jumbo model, each available in a variety of colors, with innovative packaging, and special carton sizes to fit customer needs.

Today, Witten Vent is a leader in the manufacturing of Automatic and Manual Foundation Vents, and still leads the way with unique new products, like the "No Mortar" line of foundation vents that only need 4 screws for easy installation.

The Witten mission...providing our customers with Innovation in Ventilation, which means high quality products, great service, and competitive pricing. We hope you'll agree when it comes to foundation vents...it's got to be Witten!

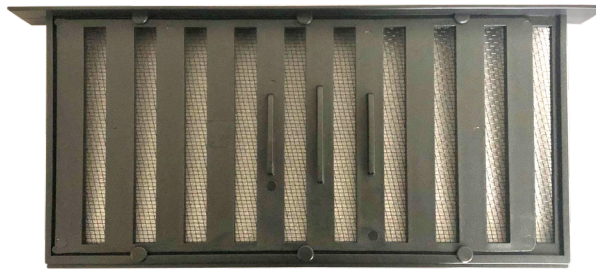
WITTEN FOUNDATION VENTS

PART NUMBER GUIDE

TYPE OF VENT

37 – Vestal
47 – Witten

↓
47



320

PRODUCT SERIES

- 303 = Automatic Vent – New Construction
- 304 = Automatic Vent – New Construction with Lintel
- 306 = Automatic Vent – Replacement (Individual Merchandising Box)
- 307 = Automatic Vent – Replacement (Bulk Display Carton)
- 315 = Automatic Vent – Replacement (Heavy Duty)
- 320 = Manual Slider – New Construction
- 319 = Manual Slider – New Construction (Jumbo Size)
- 322 = Manual Damper – New Construction
- 327 = Manual Damper – New Construction (Jumbo Size)
- 330 = Power Vent with Fans
- 500 = Manual Damper – Open Air Design
- 510 = Open Air Design
- 520 = Open Air Design – New Construction with Lintel
- 200 = Manual Slider – New Construction (Cast Aluminum)
- 000 = Vestal Vent Products

VENT COLOR

BL – Black
BR – Brown
GR – Gray
WH – White

↓
BL

COLOR OPTIONS

Black



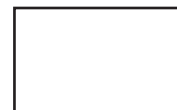
Brown



Gray



White



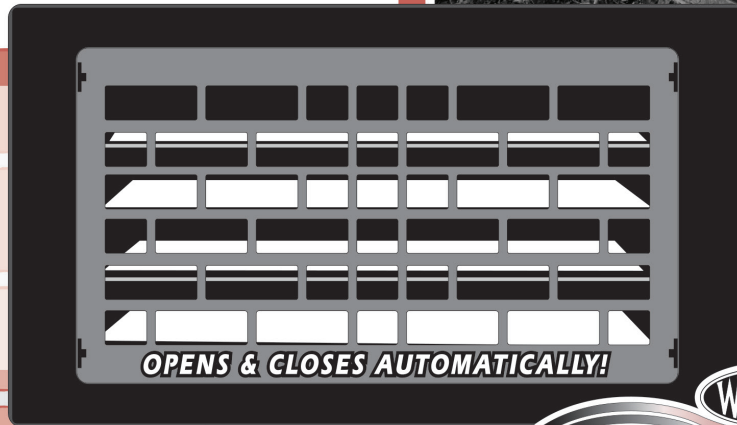
WITTEN
**Innovation
 in Ventilation**
 1-800-456-9562

Energy Saver **Automatic
 Foundation Vent**



Replaces Manual Vents

- ▶ **Automatically Opens & Closes**
- ▶ **Reduces Crawl Space Moisture**
- ▶ **Lowers Risk of Frozen Pipes**
- ▶ **Aids in Termite Control**
- ▶ **Helps Cut Fuel Bills**



White, Black, Brown, Gray



Do it Yourself!

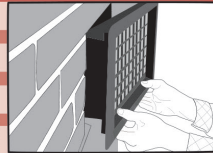
1. Knock out the old vent with a hammer and remove all mortar, if necessary.



2. Thread screws through until they just protrude through frame.



3. Place side of vent into opening first. Push the other side into place making sure the vent flanges are firmly against wall.



4. Thread screws through until they each touch side wall, then tighten approximately three (3) turns.



Calculating Number of Vents Needed

When you forget...
 Forgetting to close old-style hand-operated foundation vents in the winter could result in higher heating bills and frozen pipes. Even if you remember to open and close your old style vents at least twice a year, that may not be enough. Heat loss may still occur during unseasonal temperature changes.

80%-90% Polyethylene Ground Cover • One vent per 150-250 sq.ft. of crawl space depending on moisture conditions. Some codes allow one vent per 600 sq.ft. with ground cover, but many experts believe this is too little ventilation. Vents should be placed within 3' of corners and near dead spaces to provide cross ventilation. A minimum of 4 vents is always required. For oversized openings, use a wood shim on the bottom or on one side of vent. For under size openings, use a chisel to knock away excess mortar. For new construction, install vents after mortar work and back filling are completed. Fits standard 8"x16" opening. No special tools required! FHA (Federal Housing Authority) requires 1 sq.ft. of net free ventilation area for each 150 sq.ft. of crawl space without vapor retarder.	No Ground Cover • One vent per 60 sq.ft. of crawl space.
--------------------------------------------------------------------------------------------------------------------------------------------------------------------------------------------------------------------------------------------------------------------------------------------------------------------------------------------------------------------------------------------------------------------------------------------------------------------------------------------------------------------------------------------------------------------------------------------------------------------------------------------------------------------------------------------------------------------------------------------------------------------------------------------------------------------------------------------------------	--------------------------------------------------------------------

When you forget...
 Forgetting to open your old-style hand-operated foundation vents in the summer can cause excess moisture build-up in the crawl space. The U.S. Forestry Service has stated that nationwide, decay fungi caused by dampness and excess moisture does at least as much damage as termites - resulting in expensive repairs!



35°
 (approx.) **Automatically CLOSED**

75°
 (approx.) **Automatically OPEN**





REPLACEMENT AUTOMATIC VENTS

with Individual Merchandising Box

FEATURES:



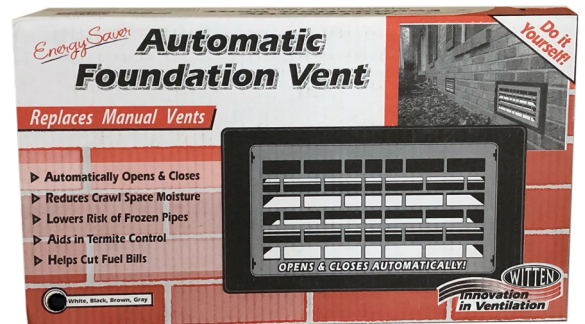
- No mortar required for installation
- Easy installation method needing only the tightening of 4 screws
- Bi-metal coil design allows aluminum louvers to open and close automatically
- Louvers fully open at 75° and fully closed at 35°
- Perma coated screen molded into vent
- 16" wide x 8" high
- Net free air 68 square inches

306 Series

Part No.	Model	Color	Packaging	Weight	Pallet Qty.
47306BL	B-E (Individual Mer. Box)	Black	12 (MB)	24 lbs.	144
47306BR	B-E (Individual Mer. Box)	Brown	12 (MB)	24 lbs	144
47306GR	B-E (Individual Mer. Box)	Gray	12 (MB)	24 lbs	144
47306WH	B-E (Individual Mer. Box)	White	12 (MB)	24 lbs	144



Each 306 Vent is individually packaged





REPLACEMENT AUTOMATIC VENTS

with Contractor Carton



FEATURES:

- No mortar required for installation
- Easy installation method needing only the tightening of 4 screws
- Bi-metal coil design allows aluminum louvers to open and close automatically
- Louvers fully open at 75° and fully closed at 35°
- Perma coated screen molded into vent
- 16" wide x 8" high
- Net free air 68 square inches

307 Series

Part No.	Model	Color	Packaging	Weight	Pallet Qty.
47307BL	B-E (Contractor Carton)	Black	20	34 lbs.	240
47307BR	B-E (Contractor Carton)	Brown	20	34 lbs.	240
47307GR	B-E (Contractor Carton)	Gray	20	34 lbs.	240
47307WH	B-E (Contractor Carton)	White	20	34 lbs.	240

Bulk Display Carton – Designed for Contractor use





REPLACEMENT AUTOMATIC VENTS

Heavy Duty



FEATURES:

- No mortar required for installation
- Easy installation method needing only the tightening of 4 screws
- Bi-metal coil design allows aluminum louvers to open and close automatically
- Louvers fully open at 75° and fully closed at 35°
- Perma coated screen molded into vent
- 16" wide x 8" high
- Net free air 68 square inches

315 Series

Part No.	Model	Color	Packaging	Weight	Pallet Qty.
47315BL	B-C (Display Carton)	Black	16	31 lbs.	192
47315BR	B-C (Display Carton)	Brown	16	31 lbs.	192
47315GR	B-C (Display Carton)	Gray	16	31 lbs.	192
47315WH	B-C (Display Carton)	White	16	31 lbs.	192

Bulk Display Carton – Designed for Contractor use





AUTOMATIC VENTS DESIGNED FOR NEW CONSTRUCTION

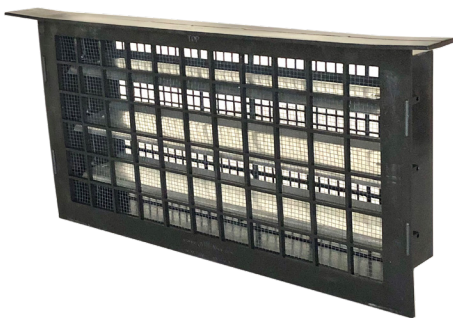


FEATURES:

- Requires mortar for installation
- Bi-metal coil design allows aluminum louvers to open and close automatically
- Louvers fully open at 75° and fully closed at 35°
- Perma coated screen molded into vent
- 16" wide x 8" high
- Net free air 65 square inches

303 Series

Part No.	Model	Color	Packaging	Weight	Pallet Qty.
47303BL	A-E No Lintel	Black	20	24 lbs.	240
47303BR	A-E No Lintel	Brown	20	24 lbs.	240
47303GR	A-E No Lintel	Gray	20	24 lbs.	240



FEATURES:

- Molded on lintel for added strength
- Requires mortar for installation
- Bi-metal coil design allows aluminum louvers to open and close automatically
- Louvers fully open at 75° and fully closed at 35°
- Perma coated screen molded into vent
- 16" wide x 8" high
- Net free air 65 square inches

304 Series

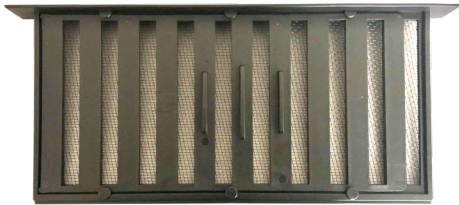
Part No.	Model	Color	Packaging	Weight	Pallet Qty.
47304BL	A-EL with Lintel	Black	12	17 lbs.	192
47304BR	A-EL with Lintel	Brown	12	17 lbs.	192
47304GR	A-EL with Lintel	Gray	12	17 lbs.	192



PLASTIC MANUAL SLIDERS

FEATURES:

- New construction vent
- Molded on lintel for added strength
- Perma coated screen molded into vent
- 16" wide x 8" high
- Net free air 45 square inches



320 Series

Part No.	Model	Color	Packaging	Weight	Pallet Qty.
47320BL	PMS-1	Black	12	16 lbs.	1080
47320BR	PMS-1	Brown	12	16 lbs.	840
47320GR	PMS-1	Gray	12	16 lbs.	840
47320WH	PMS-1	White	12	16 lbs.	840

FEATURES:

- New construction vent
- Designed for use with King & Queen sized brick
- Molded on lintel for added strength
- Perma coated screen molded into vent
- 16" wide x 9-1/4" high
- Net free air 60 square inches



319 Series

Part No.	Model	Color	Packaging	Weight	Pallet Qty.
47319BL	JMS-1 Jumbo	Black	12	17 lbs.	672
47319BR	JMS-1 Jumbo	Brown	12	17 lbs.	672
47319GR	JMS-1 Jumbo	Gray	12	17 lbs.	672



PLASTIC MANUAL DAMPERS



FEATURES:

- New construction vent
- Enhanced net free air with damper design
- Molded on lintel for added strength
- Perma coated screen molded into vent
- 16" wide x 8" high
- Net free air 72 square inches

322 Series

Part No.	Model	Color	Packaging	Weight	Pallet Qty.
47322BL	PMD-1	Black	12	15 lbs.	672
47322BR	PMD-1	Brown	12	15 lbs.	672
47322GR	PMD-1	Gray	12	15 lbs.	672



FEATURES:

- New construction vent
- Enhanced net free air with damper design
- Designed for use with King & Queen sized brick
- Molded on lintel for added strength
- Perma coated screen molded into vent
- 16" wide x 9-1/4" high
- Net free air 79 square inches

327 Series

Part No.	Model	Color	Packaging	Weight	Pallet Qty.
47327BL	JMD-1 Jumbo	Black	10	15 lbs.	560
47327BR	JMD-1 Jumbo	Brown	10	15 lbs.	560
47327GR	JMD-1 Jumbo	Gray	10	15 lbs.	560



PLASTIC OPEN AIR VENTS



FEATURES:

- No mortar required for installation
- Easy installation method needing only the tightening of 4 screws
- Enhanced net free air with damper design
- Perma coated screen molded into vent
- 16" wide x 8" high
- Net free air 68 square inches

500 Series

Part No.	Model	Color	Packaging	Weight	Pallet Qty.
47500BL	OAD-1 Damper w/ Screen	Black	8	13 lbs.	448
47500BR	OAD-1 Damper w/ Screen	Brown	8	13 lbs.	448
47500GR	OAD-1 Damper w/ Screen	Gray	8	13 lbs.	448
47500WH	OAD-1 Damper w/ Screen	White	8	13 lbs.	448

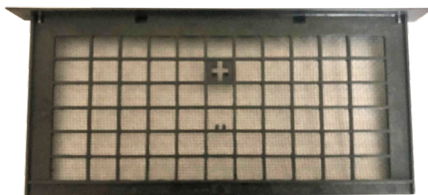


FEATURES:

- No mortar required for installation
- Easy installation method needing only the tightening of 4 screws
- Provides continuous ventilation
- Molded on lintel for added strength
- 16" wide x 8" high
- Net free air 68 square inches

510 Series

Part No.	Model	Color	Packaging	Weight	Pallet Qty.
47510BL	OAG-1 with Screen	Black	9	7 lbs.	504
47510BR	OAG-1 with Screen	Brown	9	7 lbs.	504
47510GR	OAG-1 with Screen	Gray	9	7 lbs.	504
47510WH	OAG-1 with Screen	White	9	7 lbs.	504



FEATURES:

- New construction vent
- Provides continuous ventilation
- Molded on lintel for added strength
- 16" wide x 8" high
- Net free air 72.5 square inches

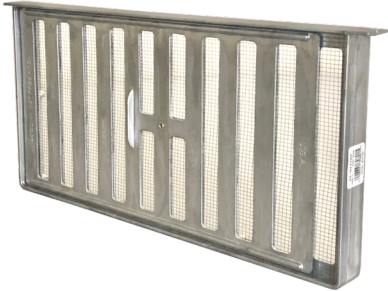
520 Series

Part No.	Model	Color	Packaging	Weight	Pallet Qty.
47520BL	OAL-1 w/ Screen w/ Lintel	Black	12	12 lbs.	600



ALUMINUM MANUAL SLIDERS

Heavy Duty – Die Cast



Model No.	Width by Height	Description	Standard Package		Part No.
			Quantity	Weight	
CAMS-1	16" x 8"	Mesh screen with sliding shutter. Built-on lintel.	12	32	47-201

Net Free Air 45 square inches

Die Cast



Model No.	Width by Height	Description	Standard Package		Part No.
			Quantity	Weight	
JO19	16" x 8"	3/4" Scalloped Lintel	12	30	37-031

Net Free Air 45 square inches

Stamped Aluminum



Model No.	Width by Height	Description	Standard Package		Part No.
			Quantity	Weight	
H-168	16" x 8"	Approx. 12 ga. Screen & Shutter	12	18	37-010

Net Free Air 35.5 square inches



LOUVERED BLOCK VENT

Adjustable Louvers 8x16 Perma-Coated Screen Attached



Model No.	Width by Height	Description	Standard Package		Part No.
			Quantity	Weight	
GA-168	16" x 8"	3-hinged louvers adjustable	12	28	37-015

Net Free Air 82 square inches

BRICK VENTS

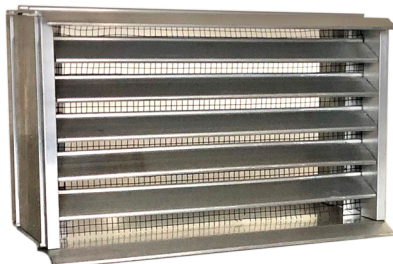
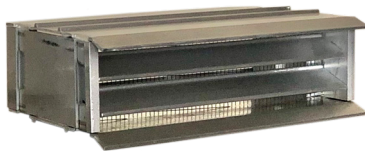
Cast Iron with Sliding Shutter



Model No.	Description	Standard Package		Part No.
		Quantity	Weight	
V364	8.25" x 2.5" x 2.75"	12	48	37-020

Aluminum Brick Vent

Fixed Louvers – Perma-Coated Screen Attached



Model No.	Description	Standard Package		Part No.
		Quantity	Weight	
AL-1	2-3/8" X 7-7/8" X 3-5/8" Replaces one brick	12	11	37-025
AL-2	5-1/16" X 7-7/8" X 3-5/8" Replaces two bricks	12	16	47-235

AL-1 – Net Free Air 12.5 square inches

AL-2 – Net Free Air 23.5 square inches



POWER VENT

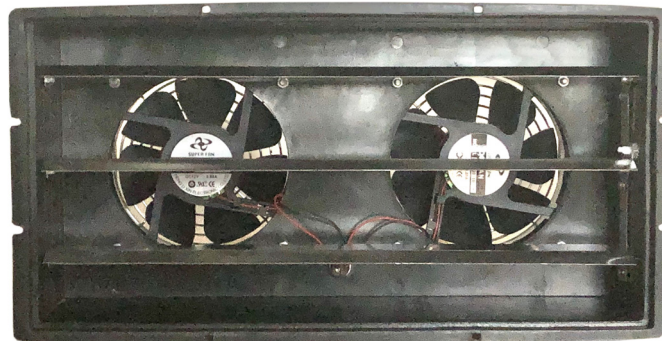
FEATURES:

- Fully enclosed dual fans provide approx. 140 CFM of airflow
- Aids in the removal of moisture by drawing air from the crawl space
- No mortar required for installation
- Easy installation method needing only the tightening of 4 screws
- Includes 8' power cord for use with 110 volt outlet
- Perma coated screen molded into vent
- 16" wide x 8" high to fit traditional concrete block opening



330 Series

Part No.	Model	Color	Packaging	Weight
47330BL	PFV-2 Power Vent	Black	1	4 lbs.
47330BR	PFV-2 Power Vent	Brown	1	4 lbs.
47330GR	PFV-2 Power Vent	Gray	1	4 lbs.
47330WH	PFV-2 Power Vent	White	1	4 lbs.



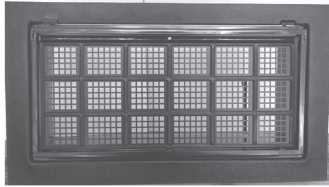


FLOOD FLAP

Multi-Purpose Vent Series

- ICC-ES Evaluated ESR-3560
- FEMA Compliant
- Each engineered vent cover provides 220 sq/ft of flood protection
- No preventative maintenance required

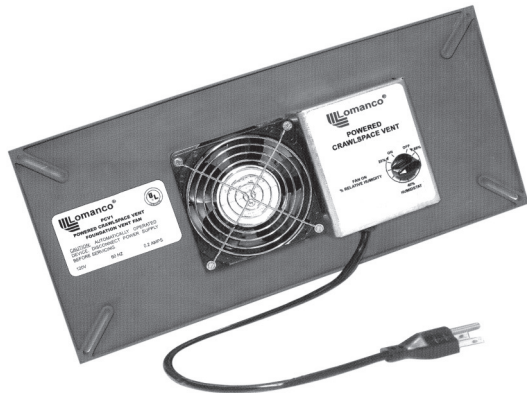
Flood Flaps® Multi-Purpose Series vent are certified to provide flood protection and air ventilation. These FEMA compliant models are perfectly designed for an enclosure or crawl space in a flood plain that desires natural air while still providing efficient flood relief when necessary. The patented grill remains closed and secure until forced open by flood waters, allowing water to enter or exit the enclosed area. Certified flood debris clearance is validated with a 5.75" opening when the grill is activated.



Model No.	Width by Height	Depth	Description	Standard Package		Part No.
				Quantity	Weight	
Flood Flap	15-5/8" x 7-3/4"	5"	Flood Vent with Flange Black Plastic	1	4 lbs.	37-050

POWERED CRAWSPACE VENT

Model No.	Overall Size (in.)	Opening Size (in.)	Cubic Feet Vent Ventilates	Number per Carton	Weight per Carton	Part No.
VPCVI	9" x 19" x 3"	8" x 16"	1650	6	28 lbs.	37-043



Specifications:

- Quiet 110 Cfm Ball Bearing Motor
- Dries Crawspace Gradually
- Humidity Sensor for Worry-Free Operation
- Thermostat Shuts Fan Off at Low Temperatures
- U.L. Approved Means Assured Safety
- Can Help Stop Mold Growth
- Upgrades Your Present Foundation Vent
- Easy Installation in a Variety of Constructions
- Mounts Behind Foundation Vent for Invisible Operation
- Quick and Simple Solution for Underventilated Crawlspaces



FOUNDATION VENT RELATED PRODUCTS

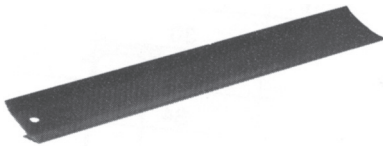
FOUNDATION VENT WINDOW WELL - GALVANIZED STEEL



Model No.	Size	Standard Package		Part Code
	Width 20"	Quantity	Wt. Lbs.	
R-207	Projection 7"	6	20	90-001
	Height 12"			

- Protects foundation vents from debris and weather
- Deep 3/8" corrugations for added strength and safety
- Roll-formed top bead
- Wide mounting flanges with closely punched holes for easy installation
- Made in U.S.A.

FOUNDATION VENT LINTEL - GALVANIZED



Model No.	Size	Standard Package		Part Code
		Quantity	Wt. Lbs.	
203	20" x 3"	25	28	51-007

- Supports masonry over foundation vents
- Galvanized to prevent corrosion
- Made in U.S.A.

TERMS AND GENERAL INFORMATION

TERMS:

Terms will be specified on each individual invoice. A service charge of 1 1/2% per month (18% ANNUAL RATE) will be assessed for all past due accounts. Where applicable, the service charge will be adjusted to meet state legal requirements.

PALLETIZING MATERIAL:

Certain Vestal products must be palletized for shipping at a net charge per pallet. There is also a net charge for heavy wooden shipping boxes. The boxes and pallets are not returnable.

DAMAGES, SHORTAGES OR LOSS IN TRANSIT:

Merchandise is inspected and counted before loading. Please inspect carefully on receipt of merchandise, noting any discrepancy or damage on the carrier's freight bill AT TIME OF DELIVERY.

Discrepancies or damage which obviously occurred in transit are the carrier's responsibility, and related claims should be made promptly, direct to the carrier. DEDUCTIONS FROM INVOICES FOR SHORTAGES OR DAMAGE CLAIMS WILL NOT BE ALLOWED.

Our responsibility as shipper ceases when goods are delivered in good order to the transportation company. We assume no liability for merchandise in transit. We will, however, render all possible assistance in recovering lost goods or in filing claims by consignee.

PRICES:

Subject to change without notice. All merchandise will be invoiced at prices in effect at time of shipment.

HANDLING CHARGE:

UPS shipments are assessed a \$4.00 charge per shipment. Quantities will be rounded up to the next even bundle unless specifically requested, then special charge will apply. A special \$5.00 handling charge will also be assessed on any product when quantity ordered is less than standard package.

RETURN GOODS:

Return goods will not be accepted without written authority from Vestal Manufacturing. A minimum charge of 20% will be made for handling, inspecting and repackaging items returned for credit. All returned goods must be shipped transportation charges prepaid. DEDUCTIONS FROM INVOICES FOR DAMAGES, DEFECTIVE, AND SHORTAGE CLAIMS WILL NOT BE ALLOWED.

TAXES:

Prices do not include sales, excise, transportation and other similar taxes present or future.

DELIVERY:

Shipments and deliveries are, at all times, subject to approval of our Credit Department. Delivery is contingent on floods, strikes, acts of God, or any other causes beyond our control.

PART CODE:

When placing orders, please give part code first, then model number.

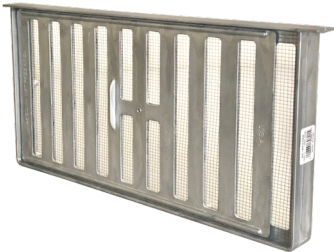
PLANT CLOSINGS:

**Vestal Manufacturing always closes the weeks of July 4th and December 25th.
No shipping, receiving, or production will occur during these times.**

BUILD YOUR FOUNDATION WITH



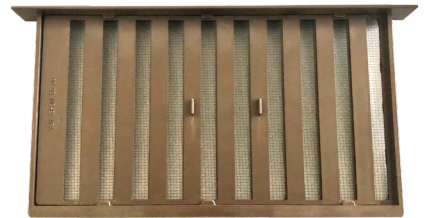
Aluminum Vents



Access Doors



Plastic Vents

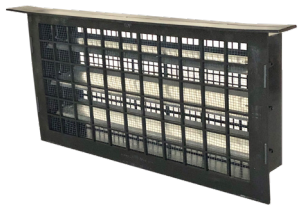


Anchor Bolts



**Hot Dipped
Galvanized
Anchor Bolts**

Anchor Straps



Automatic Vents

VENT



COMPANY

A SUBSIDIARY OF

Vestal Manufacturing Enterprises, Inc.

PO Box 420 • Sweetwater, Tennessee 37874

Sales 1-800-456-9562

Local 423-337-6125 • Fax 423-337-2003

Email - vestal@vestalmfg.com

www.wittenvent.com • www.vestalmfg.com